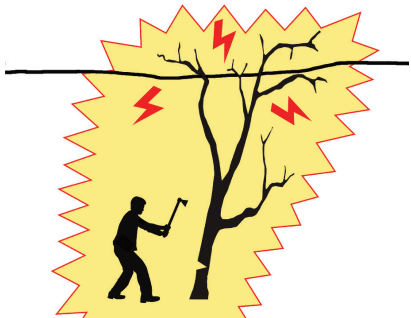
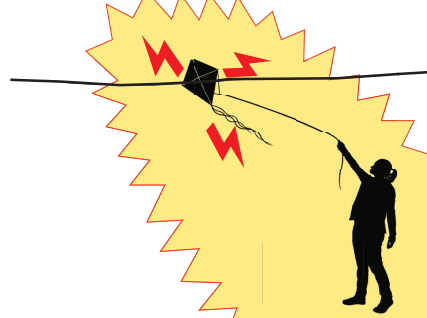


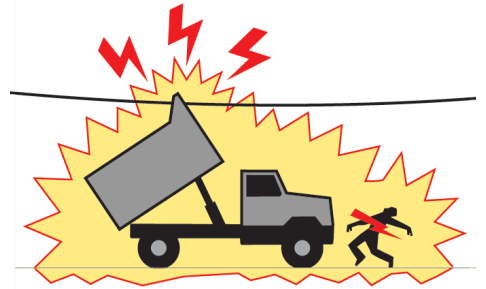
# BE SAFE AROUND ELECTRICITY



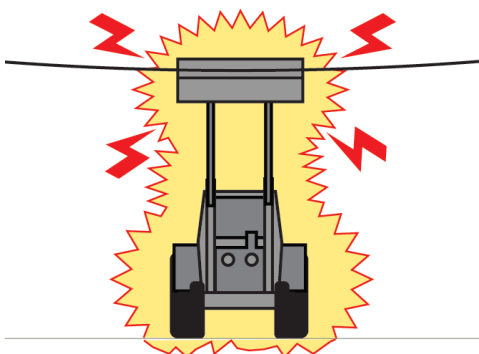
**Trimming or cutting trees near wires is for qualified professionals only.**



**Never fly a kite near overhead power lines or wires.**



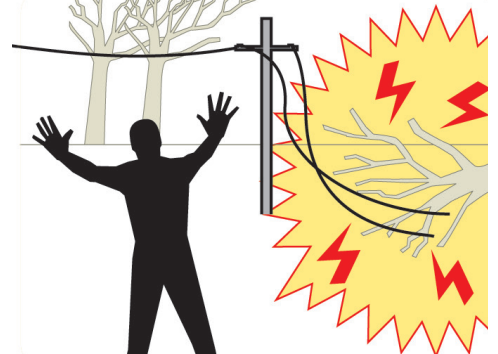
**Do not approach a vehicle that is in contact with a power line.**



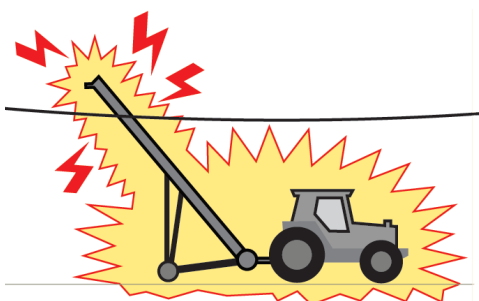
**Maintain at least three metres clearance from power lines.**



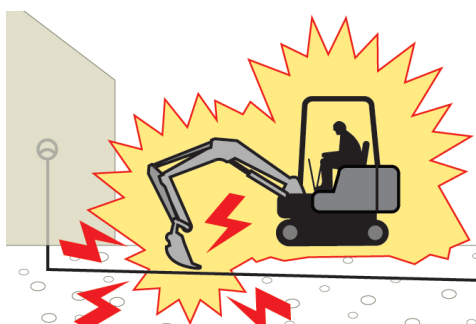
**Never try to lift an electrical wire.**



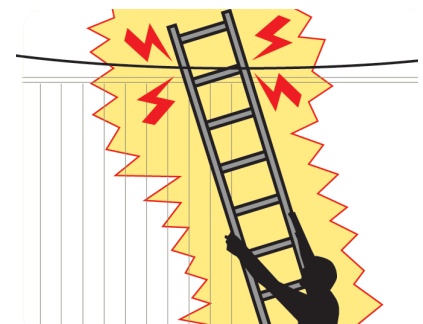
**Stay ten metres away and report fallen lines immediately.**



**Be aware of overhead wires when moving equipment.**



**Before you dig, locate under-ground cables**



**When using a ladder, look up to locate the power line.**

**In case of a POWER OUTAGE or an EMERGENCY call 1-888-825-8707**

Hydro One Remote Communities Inc.

