



# **Forest Fires**

**As temperatures heat up the  
possibility of forest fires increase**

Up-to-date information on active forest fires can be found on the Ministry of Natural Resources and Forestry website on the Interactive Fire Map  
<https://www.ontario.ca/page/forest-fires>

Applications for FireSmart initiatives can be completed on the Indigenous Services Canada website under the Emergency Management Assistance Program

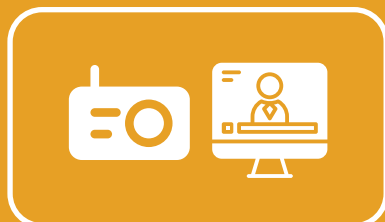
Supports and resources are also available through:  
<https://indigenousfiresafety.ca/> and <https://firesmartcanada.ca/>

## **Here is what you should know:**



To best protect your home from wildfire:

- Ensure the brush and grass around it is cut 10m away from the house
- Do not lean firewood against the house



To be aware of potential fire threats, listen to the local news and watch for community updates.



Be prepared by having a bag packed with essential items in case you need to evacuate quickly.

### **Forest Fires**

*can happen suddenly and be unpredictable, this causes the potential for communities to need to evacuate to safety should a forest fire approach the community boundary.*

*Response to forest fires is lead by the Ontario Ministry of Natural Resources, Aviation Forest Fire and Emergency Services Branch, who constantly monitors all forest fires throughout the province.*

In partnership with:



Nishnawbe  
Aski Nation  
ᐱᐱᐱᐱᐱᐱᐱᐱ ᐱᐱᐱᐱᐱᐱᐱᐱ

For more information:  
[emergency@nan.ca](mailto:emergency@nan.ca)  
[www.nan.ca/news-events/fire-updates/](http://www.nan.ca/news-events/fire-updates/)